

AI: Is it always fair?



What is AI? It stands for Artificial Intelligence. It means computers doing smart things! Why do we need to talk about AI and fairness? Let's explore these questions together.



Not Unfair Judgment



What is Bias?

Bias: When something unfairly favors one group over another.

AI can be biased because it learns from *us* !

Examples of biases: gender, racial, or age.



The Job-Finding Robot 🤖👜

A company uses AI to pick who gets a job interview. The interview. The AI seems to prefer male candidates. Why candidates. Why might this happen?

Question: Is it fair if the AI doesn't give everyone a chance? Could the data it learned from have been biased?





The Photo Filter Fun



1

A photo app has filters that make faces "prettier." Some filters only seem to work well on certain skin colors.

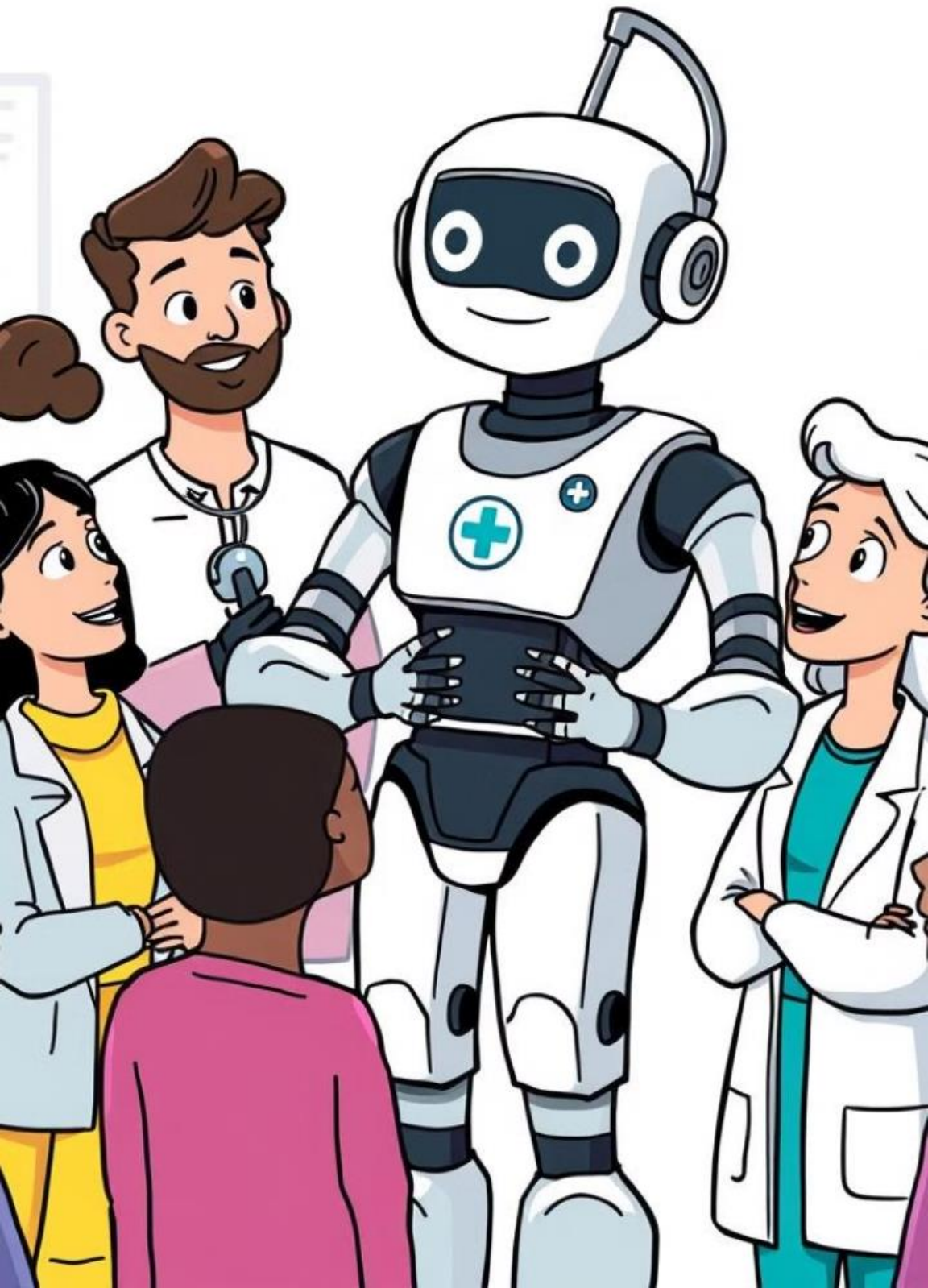
2

Question: Is it okay if a filter makes some people feel left out? How could developers make sure filters work well for everyone?

3

Algorithmic bias can occur in image processing and facial recognition.





The Helpful Healthcare Helper



AI helps doctors decide who needs treatment first.



If AI is trained on biased historical data, might it give better care to some groups?



Question: Should everyone get the same quality of healthcare, no matter what?



How to Fix It?

1

We can create new rules for AI or improve the AI training data. The goal is to be balanced.

2

Diverse teams can help make less biased AI. More perspectives are always better.

3

Always ask: "Could this AI be unfair to anyone?" Simple examples on fixing bias in data.

4

Question: How can *you* help make AI more fair?





Ethical dilemma in real life

Should we complain against a close friend who has done something wrong or should we stand by her in solidarity?

You find money on road, which might have fallen from the lady who has boarded a taxi. If you do not pick the money someone else will. What should you do?

Your doctor has recommended a test and has asked you to get it done from a particular lab. What would you think?





Self-driving Cars

A self-driving car will crash against either a senior citizen or a young person. How should this decision be made?

Who will be responsible in case of a mishap?

What if the AI model of the car identified the person wrongly? The models are not 100% accurate.



AI based Chatbots & Assistants

Alexa advised a person to stab himself to save the world. Who is responsible for such actions and consequences?

Microsoft's Tay was brought down as it started making racist comments within a very short time after it was launched.



Bank Loans

When AI helps a bank decide if a person would be able to repay the bank, it makes a recommendation but might not give an explanation.

Without explanation, is denying a loan justifiable?

Could the banks make relaxation on repayment terms for socio-economic reasons?



AI and You: Be a Critical Thinker! 🧠

1

AI is powerful, but it's not perfect.

2

Ask questions, challenge assumptions, and demand fairness.

3

You can help build a better, more ethical AI future.



Some interesting related issues...

1. AI is trained on data and data can be personal and confidential. What information about yourself you should not share with others?
2. Websites make recommendations to you based on your information available online. Do you think there are advantages or risks associated due to this?
3. People are losing jobs due to AI and automation. Big companies are getting more profitable and this is leading to more inequality in society. What should be done?
4. 'Singularity' is the stage when humans might not be the most intelligent beings on earth. Should machines be given equal rights as humans if they start thinking, acting and learning like humans?



Thank you!



www.youtube.com/experihub for more videos
on Science, AI and related innovations!